

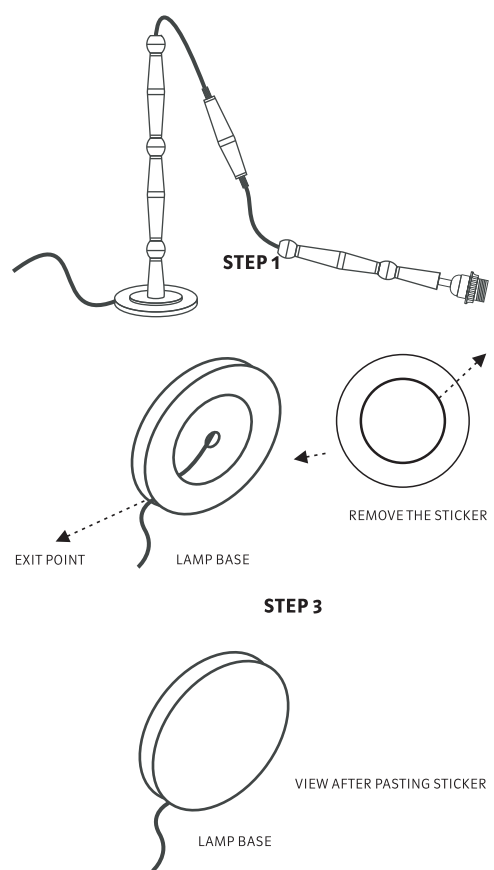
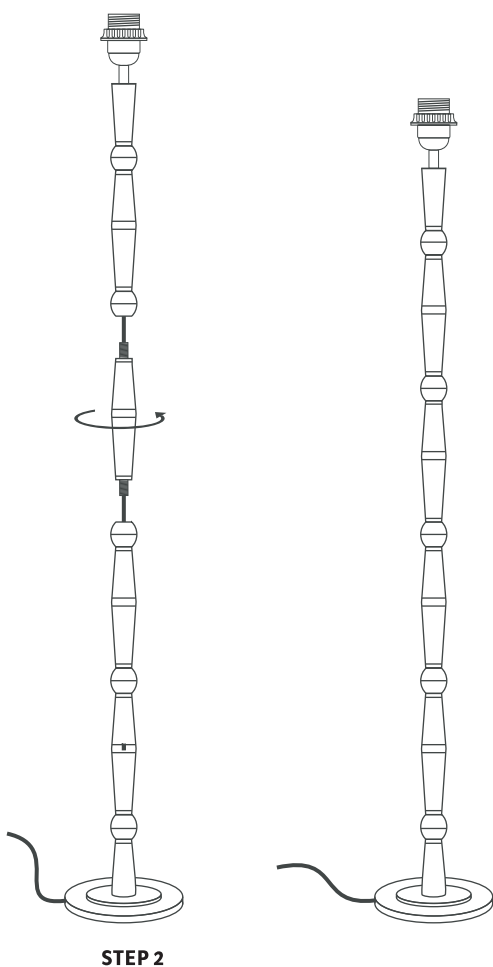


HOW TO ASSEMBLE AND USE OUR FLOOR LAMP BASE

OUR LAMP BASES ARE EASY TO ASSEMBLE. STILL, IN ORDER TO AVOID HAZARDS, WE RECOMMEND FOLLOWING THE INSTRUCTIONS AND TAKING YOUR TIME DURING THE ASSEMBLY PROCES.

INSTALLING THE LAMP BASE

- Carefully unpack the lamp base from the box.
 - Follow step 2 in order to assemble the lamp base, by screwing counterclockwise only the middle part to the base.
 - Pull the wire from the lamp base hole at the bottom and then through the exit point indicated at step 3.
 - After that, screw in the top part, by rotating it clockwise, onto the middle part of the lamp base.
 - Remove the self adhesive sticker from the black felt cover and place the adhesive part on the bottom of the lamp base.
 - Insert the correctly rated Light Bulb and plug the lamp into the socket.
- * Please use only LED type bulbs as indicated on your lampshade.
- ** Included in the package you will also find a UK to EU plug adapter.
- *** Simply fit the adapter onto the lamp base plug and then plug it into the socket.



Technical Data:
Supply Voltage: 220-240 V
Rating: E27 lamp holder, 1 x Max 10 W

CARE INSTRUCTION:
WIPE CLEAN WITH A SOFT, DRY CLOTH.

CAUTION:
PULL THE WIRE FROM THE BASE HOLE FIRST, THEN FROM THE EXIT POINT. IF THE EXTERNAL FLEXIBLE CABLE OR CORD OF THIS LAMP BASE IS DAMAGED, IT SHALL BE EXCLUSIVELY REPLACED BY THE MANUFACTURER, HIS SERVICE AGENT OR A SIMILARLY QUALIFIED PERSON, IN ORDER TO AVOID A HAZARD.

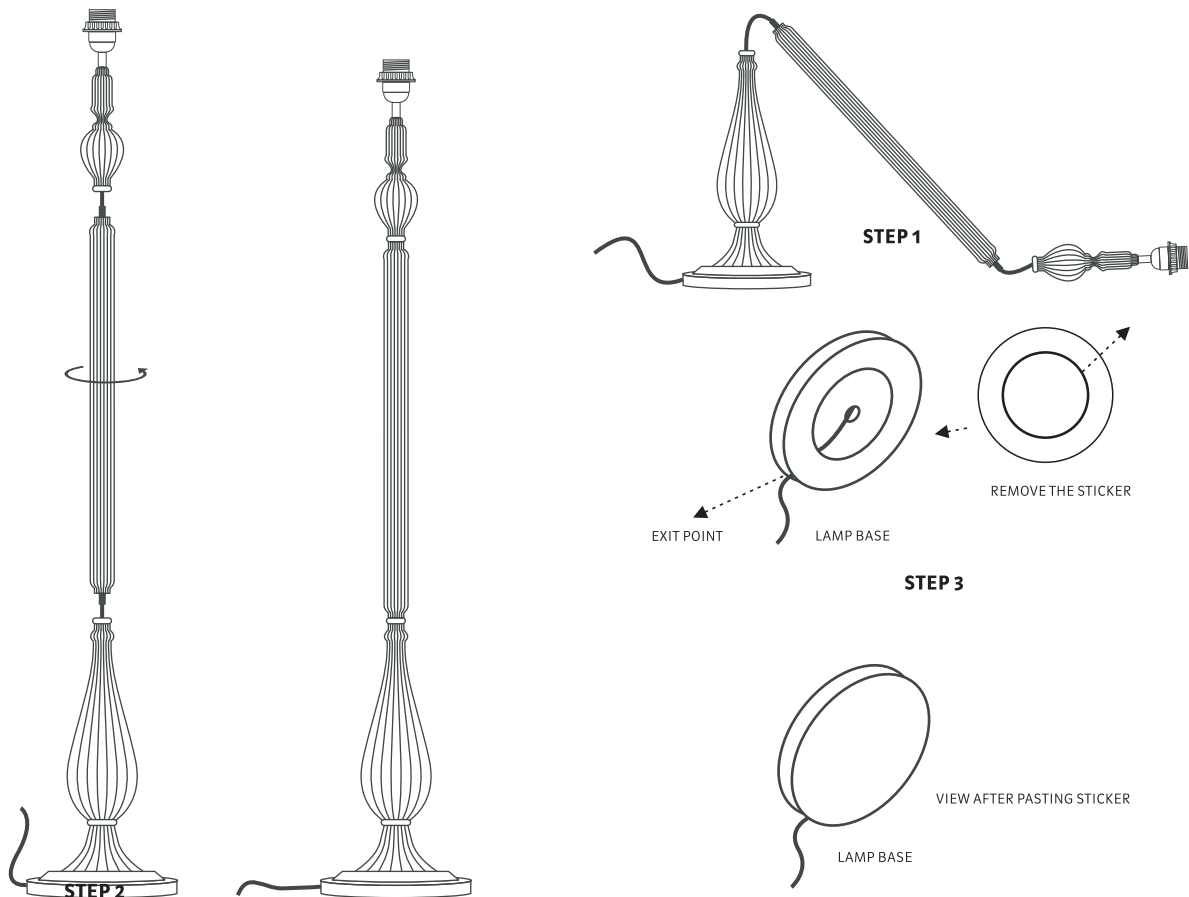


HOW TO ASSEMBLE AND USE OUR FLOOR LAMP BASE

OUR LAMP BASES ARE EASY TO ASSEMBLE. STILL, IN ORDER TO AVOID HAZARDS, WE RECOMMEND FOLLOWING THE INSTRUCTIONS AND TAKING YOUR TIME DURING THE ASSEMBLY PROCES.

INSTALLING THE LAMP BASE

- Carefully unpack the lamp base from the box.
 - Follow step 2 in order to assemble the lamp base, by screwing counterclockwise only the middle part to the base.
 - Pull the wire from the lamp base hole at the bottom and then through the exit point indicated at step 3.
 - After that, screw in the top part, by rotating it clockwise, onto the middle part of the lamp base.
 - Remove the self adhesive sticker from the black felt cover and place the adhesive part on the bottom of the lamp base.
 - Insert the correctly rated Light Bulb and plug the lamp into the socket.
- * Please use only LED type bulbs as indicated on your lampshade.
- ** Included in the package you will also find a UK to EU plug adapter.
- *** Simply fit the adapter onto the lamp base plug and then plug it into the socket.



Technical Data:
Supply Voltage: 220-240 V
Rating: E27 lamp holder, 1 x Max 10 W

CARE INSTRUCTION:
WIPE CLEAN WITH A SOFT, DRY CLOTH.

CAUTION:
PULL THE WIRE FROM THE BASE HOLE FIRST, THEN FROM THE EXIT POINT. IF THE EXTERNAL FLEXIBLE CABLE OR CORD OF THIS LAMP BASE IS DAMAGED, IT SHALL BE EXCLUSIVELY REPLACED BY THE MANUFACTURER, HIS SERVICE AGENT OR A SIMILARLY QUALIFIED PERSON, IN ORDER TO AVOID A HAZARD.