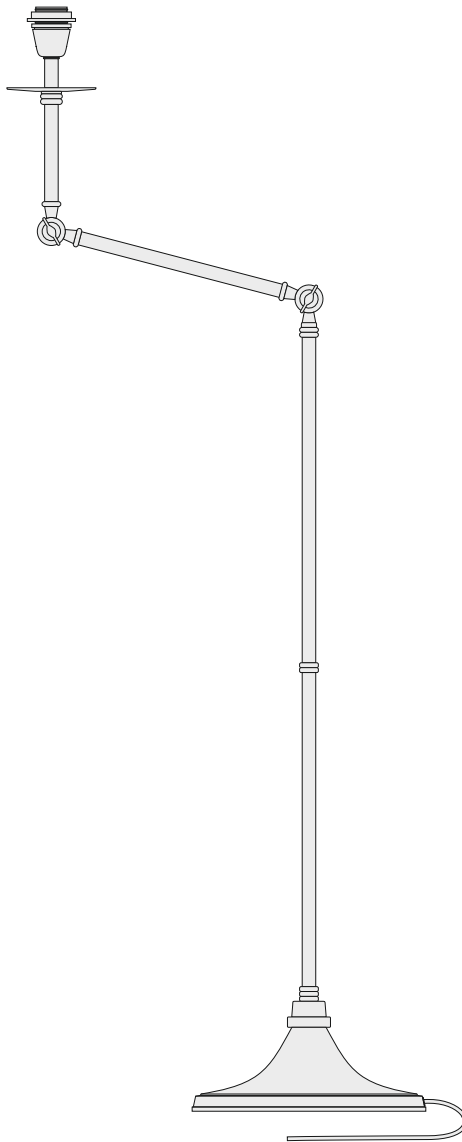


MIND THE GAP

LIGHTING

MIND THE GAP

KRAMER FLOOR LAMP IN ANTIQUE BRASS INSTALLATION GUIDE

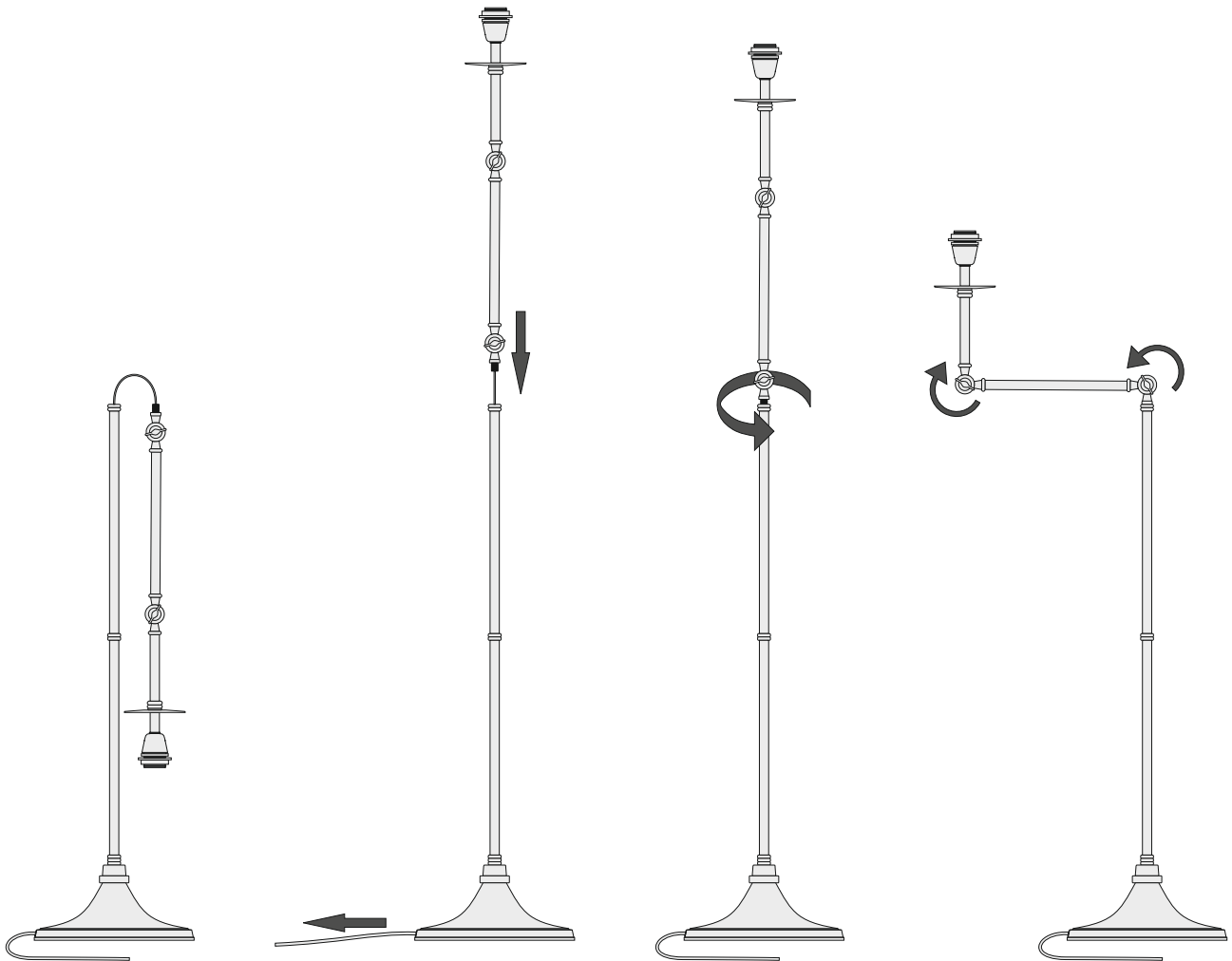


IMPORTANT SAFETY INSTRUCTIONS:

- These instructions are provided for your safety. It is very important that they are properly read completely before beginning the installation of your fixture.
- Turn off power before replacing the bulb, making sure, the bulb had sufficient time to cool down. DO NOT subject the lamp to any shock while lit as shattering of lamp may result.

TO ASSEMBLE:

- Remove all parts from carton. Do not throw away any parts.
- Carefully handle the joining elements when unpacking the product from the packaging.
- Please DO NOT pull wire during unpacking. Bad connections may result
- Do not connect electricity until lamp is fully assembled
- Make lamp straight and pull the wires outside from the bottom part.
- Release top part slowly when pulling the wire.
- Once both part meet, tighten the ring clock-wise to join both stems.
- Please remove the pieces of foam sheets from the stems.
- Open the first knob anti clock-wise and move the first segment 90° on the horizontal plane, then tighten the knob clock-wise.
Then open the second knob anti clock-wise move the second segment 90° on the vertical plane and tighten the knob clock-wise.
- Place the shades (not included) onto the holder.
- Insert 40-watt Type B bulbs (not included) into Threaded sockets.
- Installation is complete.



Technical Data:
Supply Voltage: 220-240 V
Rating: E27 lamp holder, 1 x Max 10 W

PLEASE NOTICE!

This lamp should be installed in accordance with all applicable, local installation codes, and by a person familiar with the construction and operation of it. Inspect item and contents carefully. If any damage or defect is found, do not install. Retain all packaging material until installation is complete and comply.

CARE INSTRUCTIONS:

To clean, use a soft cloth only. Do not use any chemical or abrasive cleaners.

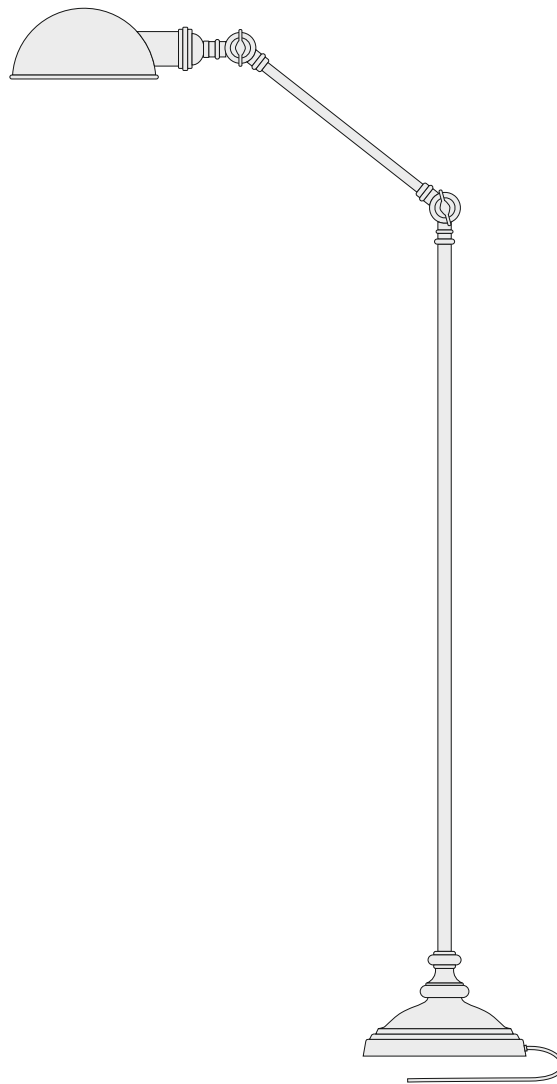
MIND THE GAP

LIGHTING

MIND THE GAP

JEFFERSON FLOOR LAMP IN POLISHED NICKEL/ANTIQUE BRASS

INSTALLATION GUIDE

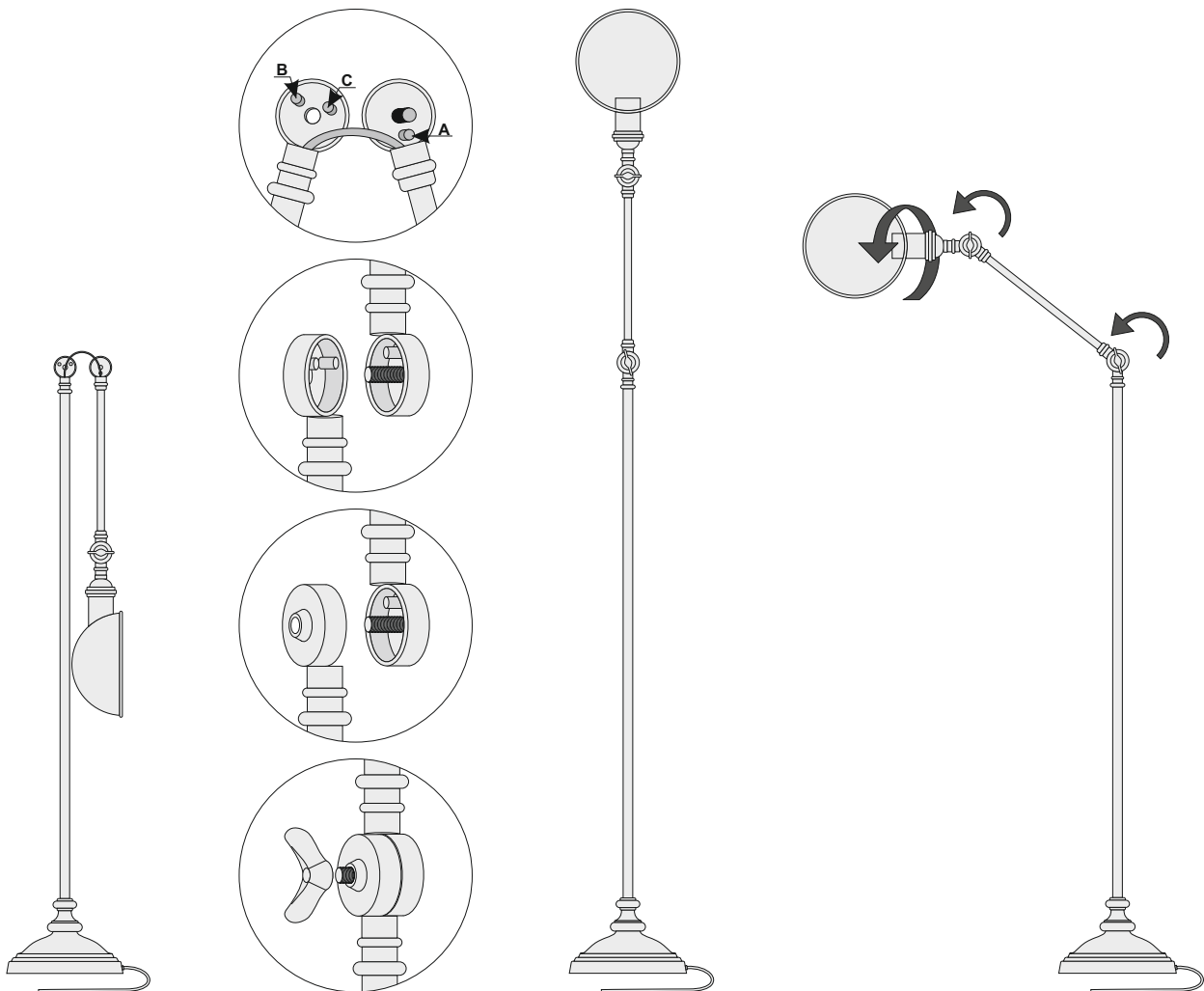


IMPORTANT SAFETY INSTRUCTIONS:

- These instructions are provided for your safety. It is very important that they are properly read completely before beginning the installation of your fixture.
- Turn off power before replacing the bulb, making sure, the bulb had sufficient time to cool down. DO NOT subject the lamp to any shock while lit as shattering of lamp may result.

TO ASSEMBLE:

- Remove all parts from carton. Do not throw away any parts.
- Carefully handle the joining elements when unpacking the product from the packaging.
- Please DO NOT pull wire during unpacking. Bad connections may result
- Do not connect electricity until lamp is fully assembled
- Open key anticlockwise carefully and observe the 3 lock points A - B - C.
- Be careful and fix both part together, lock point A has to be in between lock point B - C.
- Once both part meet, tighten the key clock-wise to join both parts.
- Be careful when screwing the two parts together so that the thread does not get caught bwtween the 2 locking points.
- Open the first knob anti clock-wise and move the first segment 45° on the horizontal plane, then tighten the knob clock-wise.
- Place the shades (not included) onto the holder.
- Insert 40-watt Type B bulbs (not included) into Threaded sockets.
- Installation is complete.



Technical Data:
Supply Voltage: 220-240 V
Rating: E27 lamp holder, 1 x Max 10 W

PLEASE NOTICE!

This lamp should be installed in accordance with all applicable, local installation codes, and by a person familiar with the construction and operation of it. Inspect item and contents carefully. If any damage or defect is found, do not install. Retain all packaging material until installation is complete and comply.

CARE INSTRUCTIONS:

To clean, use a soft cloth only. Do not use any chemical or abrasive cleaners.