

MINNIE KEMP x MINDTHEGAP WALLPAPER COLLECTION

An explosion of glorious colour and mischievous fun. The Minnie Kemp x MindTheGap wallpaper collection is about heritage and roots, storytelling and adventure. Inspired by the rich tapestry that is Transylvania and its folk law combined with that English eccentricity and playfulness you just can't seem to bottle.

MindTheGap is fast becoming one of the top names in interior design. At their design studio every piece of artwork is produced by hand by artists and is one of a kind. The result of this collaboration will make every home sing with colour.

New designs have been created as well as adaptations of existing designs. Minnie has recoloured and scaled patterns found in MindTheGap's extensive archive including, delicate block print inspired florals, bold graphic patterns, rich ikats, painterly murals, flamboyant embroidery inspired blooms and striking new colourways of MindTheGap's iconic Enchanted Woodland design.

'Having launched MindTheGap over 6 years ago, this is the first time we have ever collaborated with another creative, it's been an amazing experience for us to see our designs through Minnie's eyes, with her natural design flair for pattern, print and colour delivering surprising and transformative new versions of our designs alongside beautiful new patterns inspired by her visit to our Transylvanian homeland. The MindTheGap design team really enjoyed working with Minnie to create both entirely new designs, hand painted by our designers in the studio as well as reinterpretations of some of our most treasured designs which have been artfully redrawn and recoloured.'

Transylvania is a melting pot of peoples and cultures, each bringing their own decorative details to the stunning landscape, it was such a pleasure to share some of this rich design heritage with Minnie. We can see Minnie's joy, spirit of adventure and beautifully crafted design aesthetic imprinted on every wallpaper design in the collection.' – Stefan Ormenisan, Founder & Creative Director MindTheGap.

'In the early 90's my Dad used to tell us stories about "Vlad the Drac" a vegetarian vampire who is more interested in drinking washing up liquid than blood. These hilarious escapades were set in Transylvania so from a young age this magical country and its folk law has truly fascinated me. As you can imagine I jumped at the opportunity to visit Mind the Gap's stunning design studio in Cluj and to work with their team of in-house artists to envisage new designs. Transylvania has a wealth of remarkable architecture in its medieval towns and villages, its churches adorned with 14th century paintings are breath-taking. There is so much colour, chalky blue painted houses gleam against verdant green hills that are covered in a carpet of wildflowers, dog roses, orchids, wild strawberries, bright yellows, violets and everywhere there is music warming your soul with good vibrations! I have been so inspired by Stefan and the Mind the Gap team, working together on this collection has been an honour. The designs are versatile and contemporary with tailored stripes perfect for a study and at home office space. Textured "plains" like Samoa that will make any space come alive in such a soft liveable way that's truly unique and then Shepherds Delight, a new design inspired by hand embroidered batik textiles and the marmalade night skies spent drinking shots of Palinka in my heart land Transylvania. Raise your glasses, cheers and Egeszegere!' – Minnie Kemp, Design Director, Firmdale.



For further information, samples or images please contact UP Public Relations:
Hannah Liddle hannah@up-publicrelations.com or Jess Burnett Jess@up-publicrelations.com

www.mindthegap.com



Stefan Ormenisan & Minnie Kemp



For further information, samples or images please contact UP Public Relations:
Hannah Liddle hannah@up-publicrelations.com or Jess Burnett Jess@up-publicrelations.com

www.mindtheg.com

Read The Room

A completely new wallpaper design inspired by the memories of colour from Minnie's visit to Transylvania, reminiscent of the chalky blue, soft cream and pretty pink of village houses, to rich earth, blue sky and rolling hills, 'Read the Room' captures the colours of MindTheGap's homeland. Each painterly shape, hand painted in MindTheGap's design studio, stacks to create a geometric pattern that feels like a hand painted mural. (New design: 1 colourway. £229 per panel 156x300cm)

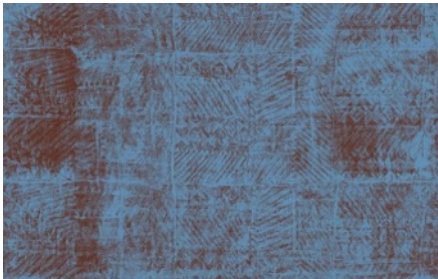


For further information, samples or images please contact UP Public Relations:
Hannah Liddle hannah@up-publicrelations.com or Jess Burnett Jess@up-publicrelations.com

www.mindthegap.com



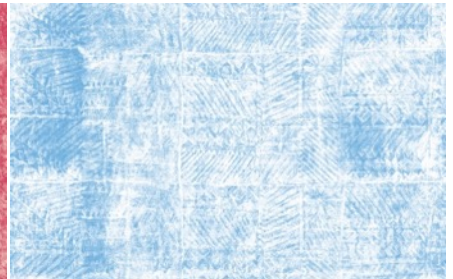
Samoa
 Inspired by an original fabric design from the islands of Pacific showing a traditional handmade Tapa cloth (barkcloth) pattern, the Samoa wallpaper has been recoloured by Minnie Kemp in a palette of bold hot pink 'Raspberry' charming blue and white 'Sky' and captivating blue and brown colourway 'Chocolate'. At 156cm wide and printed over 3 rolls, the irregular and artisanal pattern repeat provides a mural effect on the wall. Adding colour and subtle texture to a space, the Samoa design can be combined with other patterns or used as a stand-alone pattern in a layered interior.
 (3 new colourways, £229 per roll: 52x900cm)



Samoa – Chocolate



Samoa – Raspberry



Samoa - Sky



For further information, samples or images please contact UP Public Relations:
 Hannah Liddle hannah@up-publicrelations.com or Jess Burnett Jess@up-publicrelations.com

www.mindtheg.com

Enchanted Woodland

Fast becoming one of MindTheGaps's most iconic designs, the dreamy fairy-tale landscape of Transylvania is illustrated in the Enchanted Woodland wallpaper which features a mysterious cast of Transylvanian animal inhabitants. This two-tone pattern has been recoloured by Minnie Kemp in five new colourways including chalky sky blue, 'Dusk' a colour synonymous with Transylvanian village houses, which are traditionally painted in this captivating colour. Elevating this treasured pattern Minnie Kemp has added gentle neutral 'Solstice', deep blue 'Twilight', monochrome 'Equinox' and a combination of soft green with plaster pink in 'Dawn'.

(5 new colourways. £229 per roll: 3 x 52x300cm)



Enchanted Woodland – Dawn, Dusk, Twilight, Solstice & Equinox.



For further information, samples or images please contact UP Public Relations:
Hannah Liddle hannah@up-publicrelations.com or Jess Burnett Jess@up-publicrelations.com

www.mindtheg.com

Enchanted Woodland in Equinox



For further information, samples or images please contact UP Public Relations:
Hannah Liddle hannah@up-publicrelations.com or Jess Burnett Jess@up-publicrelations.com

www.mindtheg.com



Shepherd's Delight

Hand painted in MindTheGap's design studio the new 'Shepherd's Delight' wallpaper is available in a smaller scale and a larger mural repeat. The batik inspired design is inspired by an evening in Transylvania looking up at the marmalade skies sharing a glass of Palinka with the tinkling of the piano keys in the background. The gentle batik inspired background is brought to life by bold water-coloured blooms. This refreshing design is available in a single colourway of multi-coloured flowers on a soft blue ground. Available in two scales, 'Shepherd's Delight' is offered as both a roll and a larger scale flamboyant mural.

(New design: 1 colourway in two scales. £229 per 156x300cm large scale panel or £229 per roll: 52x900cm)



For further information, samples or images please contact UP Public Relations:
Hannah Liddle hannah@up-publicrelations.com or Jess Burnett Jess@up-publicrelations.com

www.mindthegap.com



Wallflower – Sunny

Clementine

Moss

Raspberry

Sky

Splash

Wallflower

New wallpaper design 'Wallflower' was inspired by a hand rolled wallpaper Minnie Kemp found on the kitchen walls of Apafi Manor in the village of Mălâncrav. Surrounded by rolling green Transylvanian hills, Apafi Manor's long history saw it confiscated by the communists in 1949, used as a shelter for animals and becoming derelict until the heritage conservation Mihai Eminescu Trust restored this historic property, adding an authentically produced wallpaper to the kitchen walls. The 'Wallflower' design, hand printed from a hand carved block in the MindTheGap design studio, features trailing leaves and buds on a painterly ground. Offered as both positive and negative options, where the block print pattern appears either printed onto a neutral ground or etched from a bold colour, this enchanting design is available in 'Sunny', 'Clementine', 'Raspberry', 'Sky', 'Moss' and 'Splash'.

(New design, 5 colourways. £229 per roll: 52x900cm)



For further information, samples or images please contact UP Public Relations:
 Hannah Liddle hannah@up-publicrelations.com or Jess Burnett Jess@up-publicrelations.com

www.mindthegap.com



Chimney Cake – Apple



Chimney Cake – Blueberry



Chimney Cake - Butter



Chimney Cake - Clementine



Chimney Cake - Icing

Chimney Cake

A charming single colour design, the 'Chimney Cake' wallpaper is an ode to the simple beauty of craft and pattern. Minnie Kemp has reinterpreted MindTheGap's original multicoloured Varanasi wallpaper design which embodied the spirit of Uttar Pradesh, celebrating age-old craft with joyful motifs; each shape traditionally carved by hand into wood before being expertly printed. By stripping back the colour palette into two tone colourways of indulgent yellow and white 'Butter', deep orange and white 'Clementine', fresh and pretty pink and green 'Apple' classic blue and white 'Blueberry' and neutral and white 'Icing' Minnie has brought into focus the artisanal nature of this pleasing pattern. (Reinterpretation, 5 colourways. £159 per roll: 3 x 52x300cm)



For further information, samples or images please contact UP Public Relations:
 Hannah Liddle hannah@up-publicrelations.com or Jess Burnett Jess@up-publicrelations.com

www.mindthegap.com

Pallet

The unique MindtheGap 'Traite Des Couleurs' wallpaper design which presents pages from a book of colours created by A. Boogert in 1692 was the inspiration for this re-worked version 'Palette' created in collaboration with Minnie Kemp. Every colour has been painted by hand in the MindTheGap studio and placed in an ombre of colours across a 156cm panel, bringing a joyous graphic depiction of painterly colours to the wall.

(New design: 1 colourway. £229 per panel 156x300cm)



For further information, samples or images please contact UP Public Relations:
Hannah Liddle hannah@up-publicrelations.com or Jess Burnett Jess@up-publicrelations.com

www.mindthegap.com

Ikat

Originally created in the MindTheGap design studio by hand carving a block, from which a repeating pattern of linear stripes, circular eyes and floral motifs was inspired by the Ikat patterns of South East Asia, South America and West Africa. Minnie Kemp has revived this artisanal design in a range of new colourways including a deep berry red 'Raspberry Ripple', 'Notting Hill' a combination of plaster pink and green with crisp orange highlights alongside 'Carnival' a joyful blue colourway with magenta pink and bright yellow accents.

(3 new colourways. £229 per roll: 3 x 52x300cm)



Ikat - Carnival



Ikat - Notting Hill

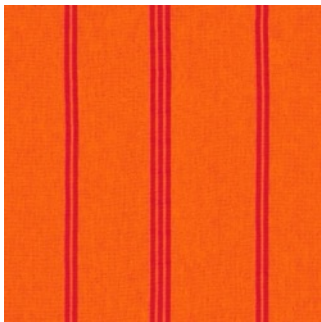


Ikat - Raspberry Ripple

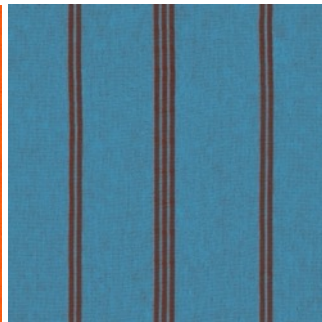


For further information, samples or images please contact UP Public Relations:
Hannah Liddle hannah@up-publicrelations.com or Jess Burnett Jess@up-publicrelations.com

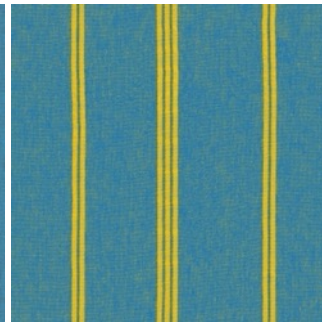
www.mindthegap.com



Pin Up - Calipso



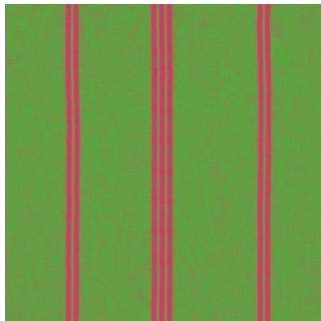
Pin Up - Cornetto



Pin Up - Magnum



Pin Up - Mini Milk



Pin Up - Twist

Pin Up

Simple, yet commanding, MindTheGap's iconic Kaitlin Stripe wallpaper has been reimagined as 'Pin Up'. Each of the five new colourways working beautifully as a stand-alone design or combined with patterns in the Minnie Kemp x MindTheGap collection. New colourways which feature a herringbone textured ground, include dramatic orange and hot pink 'Calipso', fresh green and hot pink 'Twist', denim blue with rich chocolate 'Cornetto', and blue with sunny yellow 'Magnum' alongside 'Mini Milk' a softer colour combination plaster with apple green. (5 new colourways. £159 per roll: 3 x 52x300cm)



For further information, samples or images please contact UP Public Relations:
Hannah Liddle hannah@up-publicrelations.com or Jess Burnett Jess@up-publicrelations.com

www.mindthegap.com

EDITORS NOTES:

Minnie Kemp X MindTheGap wallpapers launch 3rd October 2023.

The collection comprises of 9 designs, offered in 30 colourways. Prices from £159 to £229 for 3 x 52x300cm.

3 entirely new designs by Minnie Kemp are presented alongside 2 reimaged designs and 4 iconic MindTheGap designs that have been recoloured.

Available from www.mindthegap.com MindtheGap's Design Centre Chelsea Harbour London showroom, and stockists and distributors in 70 markets worldwide.

MINNIE KEMP

Minnie Kemp is a London/New York based Artist and Interior designer whose ten year career in hotel design has seen her working on international building projects from the ground up. This includes Ham Yard Hotel in London and The Whitby Hotel in New York. She is currently working as design director for the Kit Kemp design studio on a new build Hotel in Tribeca on Warren Street. The highlight of her year so far has been working with ABBA on designing the VIP Oceanbird lounge in Stratford for the VOYAGE show.

In 2020 Minnie spearheaded the Kemp design studio residential department and has since then worked on properties in Palm Springs, Westchester, London and currently The French Riviera. Minnie has re designed the head offices in Bedford place for Bloomsbury publishing, this includes, the reception, Authors Lounge, orangery and fully sustainable craft house. Minnie is currently working with the Haymarket Theatre on a special project launching in January 2024

Minnie's colourful flare can be seen all over the Chelsea Design Centre having been selected for the first ever WOW house exhibition featuring the work of twenty top international designers in 2022. This year she was a member of the WOW house steering committee. Minnie has worked in collaboration with a number of designers on their shop windows including Porta Romana and Julien Chichester.

Minnie has participated in a number of group shows in London exhibiting her heavily embroidered decorative pieces and was commissioned by Thomas Lavin & Christopher Farr to make a set of cushions for the Pacific Design Centre in Los Angeles, California.

From 2020-2023 Minnie was the style columnist for LivingETC magazine, sharing her obsession with Craft and Design and her vast suppliers list built up over the years. Now Minnie writes weekly articles for the Kit Kemp Design Thread online magazine, this includes interviews with other artists and makers, "out and about" reviewing exhibitions and "do's & don'ts" articles on interior design.

MINDTHEGAP

Surrounded by a cultural melting pot of craft and tradition, MINDTHEGAP's artistic identity is rooted in their captivating homeland of Transylvania. Evocative and individual, collections take inspiration from the region's diverse ethnic heritage, rich cultural history and authentic wanderer's spirit. From the unseen and undiscovered to the instantly recognisable and iconic, MINDTHEGAP pay homage to art, architecture, artefacts, culture, rituals and people from all four corners of the globe.

Created with appreciation for the history of art and design, collections present a host of different styles, each with a strong aesthetic identity, inspired by the marvellous creations of mankind. Led by founder Stefan Ormenisan, the design team creates vintage, classical, traditional and contemporary looks, generating a unique bohemian lifestyle that encapsulates the spirit of wanderlust of their birthplace.

MINDTHEGAP products are rich in detail with high quality finishing and unique embellishments. They design and produce premium home furnishings, inspired by the traditions and craftsmanship of their ancestors.

Product ranges include framed wall art, spanning contemporary and traditional art and photography, diverse wallpaper and fabric collections, upholstered furniture, including chairs, sofas, stools and ottomans in a selection of styles, decorative cushions and a lighting collection, which encompasses floor and table lamps and pendant lighting, with shades in MINDTHEGAP's distinctive fabrics adorned with trim and tassels.

MINDTHEGAP are not just purveyors of wallpaper or fabric, they are creators of moods, stories and lifestyles.

www.mindthegap.com



For further information, samples or images please contact UP Public Relations:
Hannah Liddle hannah@up-publicrelations.com or Jess Burnett jess@up-publicrelations.com

www.mindthegap.com

Postcards from Transylvania



For further information, samples or images please contact UP Public Relations:
Hannah Liddle hannah@up-publicrelations.com or Jess Burnett jess@up-publicrelations.com

www.mindtheg.com